

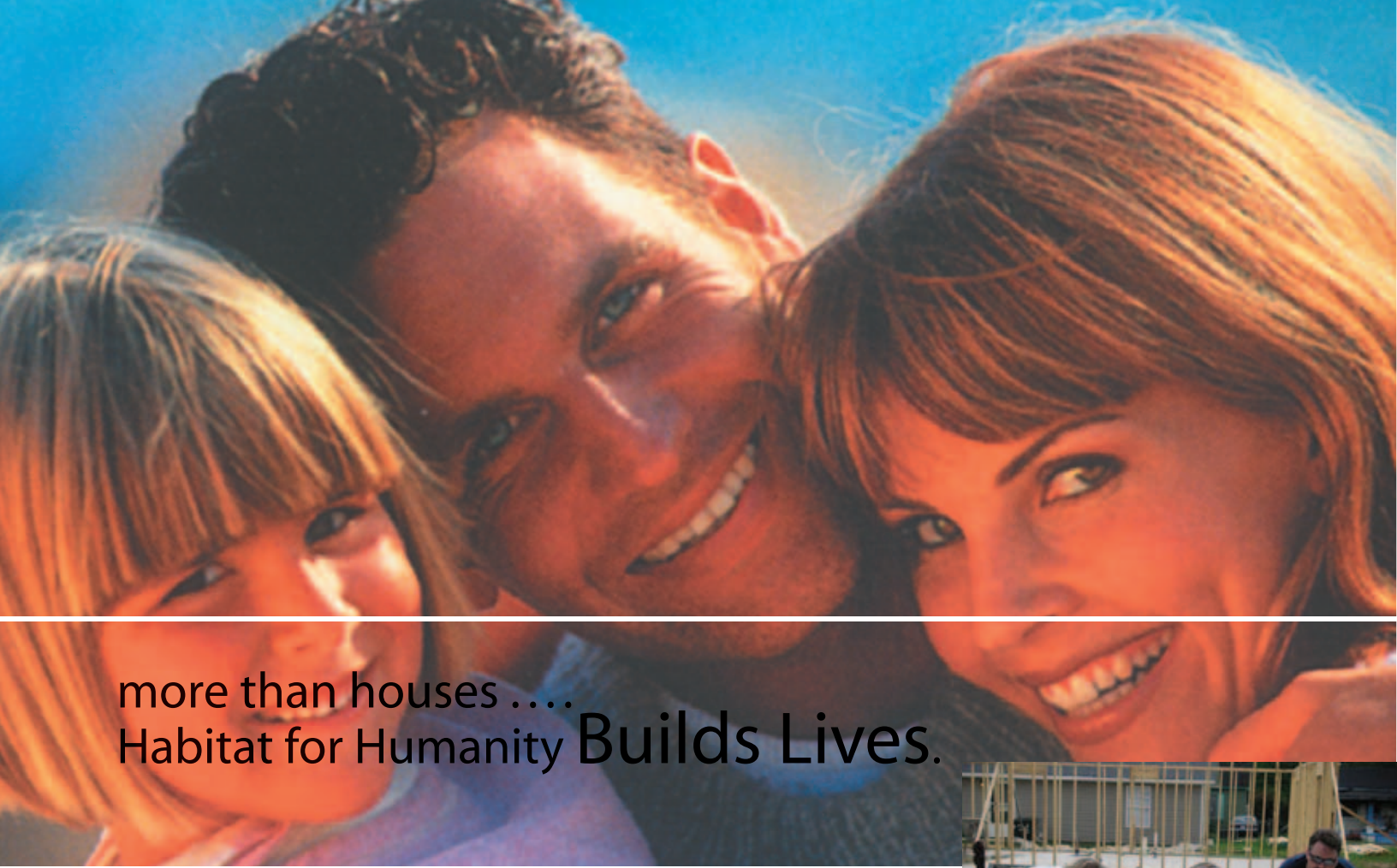
perspectives

Mercedes Recognized For Quality

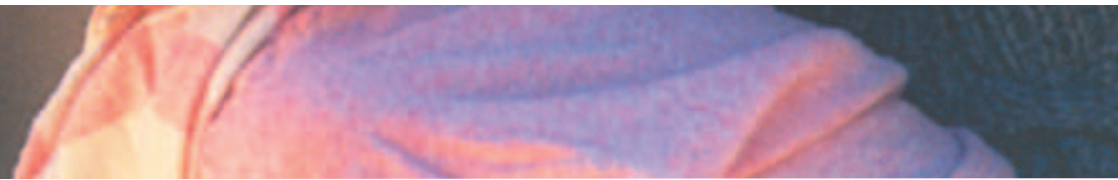
Page 7



PRESORTED
STANDARD
U.S. POSTAGE
PAID
PERMIT 200
TUSCALOOSA, AL



more than houses
Habitat for Humanity Builds Lives.



Volunteering for a Habitat work day has many special benefits, not just for the volunteer but for the business/organization that sponsors the day as well. Volunteers can help their community while learning new skills and gaining tremendous satisfaction for their efforts. The sponsoring business/organization, in turn can capitalize on an incredible teamwork and bonding experience.

Habitat for Humanity of Tuscaloosa would like to thank **Tuscaloosa Memorial Chapel** and **Landreth & Assoc.** for making this ad possible.

Habitat for Humanity proudly announces partnership with the following Chamber members:

- Gulf States Paper Corporation
Co-sponsor of Habitat house #31 for the Watkins family
- AmSouth Bank, Phifer Wire, and Randall Publishing
Co-sponsors of Habitat house #32 for the Thomas family



contents

perspectives

Perspectives September/October 2005
copyright 2005

Howard Garrison, Chamber Chairman
Johnnie Aycock, Chamber President

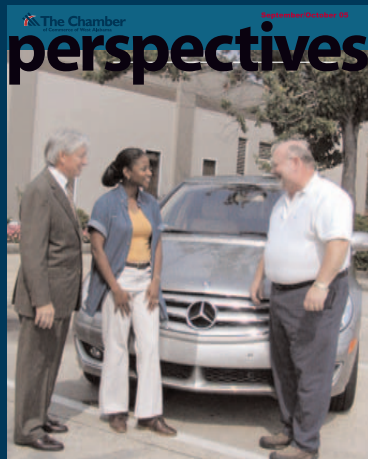
Published by The Chamber of
Commerce of West Alabama and
Word Way Press

Editorial
Dick Johnson (205) 391-0561
dick@tuscaloosachamber.com

Advertising
Michael Jordan (205) 349-1900
mj@wordwaypress.com



Copyright 2005. The Chamber of
Commerce of West Alabama. All rights
reserved. Information contained is
gathered from sources considered
reliable. The Chamber and Word Way
Press cannot accept responsibility for
errors or omissions in this publication.



Mercedes-Benz US International in
Tuscaloosa County has introduced a new
vehicle - and won some outstanding
awards for its current production at the
Vance facility. Gene Poole, left, who will
become Chairman of The Chamber in
2006, Felyicia Jerald of Mercedes and a
member of The Chamber's Board of
Directors, and Vance Mayor Keith
Mahaffey, talk about the new vehicle.
See story on Page 7.

Chairman's Column Howard Garrison's Message 4	Country Inn and Suites Masters the Details 13
Leadership Tuscaloosa Note 4	JA Graphic Design Passion and Inspiration 14
Hospice: A Legacy of Care 5-6	Beauty Works 'Unlike Any Other' 15
Mercedes Honored 7	VA Credit Union Cuts Ribbon 16
Dupree Painting 8	Wheat's Opens New Store 16
Tuscaloosa Optical 8	Peoples Bank Breaks Ground 16
Yeager & Christian 9	Welcome New Members 17
Vaughn Leads Leadership Organization 10	Davis, Skagen Join Board 18
Bailey Leads Leadership Alumni 11	Hampton Inn Honored 18
DCH Execs Recognized 12	Note on E-mails 18
Job Changes at JMF 12	

Your Chamber Team

Johnnie Aycock, President
391-0559, johnnie@tuscaloosachamber.com

**Donny Jones, Vice President,
Technology and Operations**
391-0552, donny@tuscaloosachamber.com

**Dick Johnson, Vice President,
Organizational Development
and Communications**
391-0561, dick@tuscaloosachamber.com

**Loo Whitfield, Director
Education Development and Adopt-A-School**
391-0563, loo@tuscaloosachamber.com

**Stacey Gann, Assistant to President,
Manager of Special Events**
391-0559, stacey@tuscaloosachamber.com

Tracy Crumpton, Office Manager
391-0554, tracy@tuscaloosachamber.com

**LoWanda McLaughlin-James,
Administrative Assistant**
391-0551, lowanda@tuscaloosachamber.com

**Carolyn Tubbs, Assistant Director
Education Development and Adopt-A-School**
391-0556, carolyn@tuscaloosachamber.com

The Chamber of Commerce of West Alabama
2200 University Boulevard
P. O. Box 020410, Tuscaloosa, AL 35402
(205) 758-7588
Fax: (205) 391-0565
tuscaloosachamber.com

**WE'VE MADE A NAME FOR OURSELVES.
[AGAIN.]**

BF Goodrich Employees
Federal Credit Union is now:
**The Credit Union
of Alabama** A Federal
Credit Union
Formerly BF Goodrich Credit Union

NCUA **Proud Investor in**
The Chamber
of Commerce of West Alabama

Asa G. Trammell,
Founding Charter Member

Gray Hall,
Founding Charter Member

CHAMBER MAKES GREAT PROGRESS ON 2005 PLAN



We're well into the second half of the 2005 Chamber year, and we're making great progress on our Plan of Work for the year.

Our Board of Directors has been responsive to calls for help with membership renewals and membership recruitment. Our five division chairpersons are providing active, involved leadership and using their Advisory Councils to help them.

We've taken note of the 20th anniversary of our Adopt-A-School Program, and welcomed a new staff member, Loo Whitfield, to guide that effort.

We're partnered with groups like the League of Women Voters and the Leadership Tuscaloosa Alumni Association to help our members—and the community at large—make informed choices at the polls in the City of Tuscaloosa elections.

We're had another successful Fly In to Washington, D. C., to press the interests of the Tuscaloosa County area with lawmakers and their staffs.

We've added more than 80 new investors in The Chamber—without having a full-scale membership campaign. Prospects are getting The Chamber story with the help of our media members, and they're responding.

All of these accomplishments are made possible by the dozens of volunteers who take an active role in The Chamber. And new Chamber leaders are coming forth; see the stories on Pages 10-11 for examples of this fact.

As we go down the home stretch of 2005, I'm excited about what we're yet going to accomplish. The quality of our Board and Committee leadership and the dozens of volunteers who work under them make the tenure of this Chamber Chairman an exciting and rewarding experience.

My thanks to all of you folks. I'm really enjoying myself.

Howard

LEADERSHIP TUSCALOOSA CORRECTION

In the last issue of *Perspectives*, there was an article about the Leadership Tuscaloosa graduation ceremonies. The article also listed the participants in the 2004-2005 class, but not *all* of the participants. We failed to list **Pat**

Gregg as a graduate of the program, and we are sorry for that oversight.



Pat Gregg

Pat is director of community relations for Easter Seals of West Alabama. She's a native of Tuscaloosa, but admits that Leadership Tuscaloosa opened her eyes to some aspects of the community of which she was unaware.

"One example that comes to mind," she said, "is the number of homeless people in our county.

Thankfully, we have excellent social services agencies that work diligently to alleviate the problems of homelessness, hunger and other issues that face the less fortunate."

Pat said Tuscaloosa is "a great city that has even greater potential."

"I hope to use what I learned in Leadership Tuscaloosa to make my community an even greater place in which to live, work and play."



FITTS
ARCHITECTS

www.
fittsarchitects
.com

205.759.5792

PRINTING ERROR

In the June-July issue two more mistakes were inadvertently made. Westside Church of Christ was misspelled and a font issue caused Alabama Gas Corp. to jump out of place. We apologize for the mistakes.

HOSPICE OF WEST ALABAMA – A LEGACY OF CARE AND SERVICE

Since 1980, Hospice of West Alabama has provided compassionate and effective service to the terminally ill and their families in Tuscaloosa County and West Alabama. A private, non-profit organization, the initial impetus for hospice came from FOCUS On Senior Citizens, and later, the West Alabama Health Council coordinated the planning and development activities that led to Hospice of West Alabama.

Today, Hospice of West Alabama has developed into one of the premier home health care delivery services in any community for the terminally ill, with a new, state-of-the-art facility now open on 3.2 acres of land on the campus of the VA Hospital. This beautiful 10-bed facility, which is also home to the administrative offices of HOWA, opened its doors on November 1, 2004 and provides a home-like environment to meet the needs of the patients and their families.

Initially, HOWA was planned as a service of volunteer support and coordinated community resources with donations from churches, individuals and a demonstration grant from the United Way. By October, 1982, Hospice was well underway in the community. Selected nurses from the Home Health Care Agency of North Alabama were providing services, and sixty volunteers had been recruited and trained to provide care and support.

In the early years, Madeline Hill served as the Executive Director on a part-time basis, with a team of volunteers providing most core services and five physicians rotating to provide medical supervision. Dr. Robert Posey became the first Medical Director for HOWA in 1982; with Dr. George Miller assuming the role in 1984, a position he continues to serve in today. Hospice became a United Way member agency in 1984.

Hospice grew steadily, and in 1986, Julie Sittason was hired as the new, full-time Executive Director of Hospice of West Alabama. With effective leadership and management skills, vision and a compassionate heart, Julie has worked tirelessly to this day to build one of the most respected and

successful health care programs anywhere.

In her first months at HOWA, Julie worked to remove the waiting list for care and expand areas and people Hospice could serve. Early in the development of delivery of care, HOWA hired part-time nurses and used nurse volunteers who would see patients after leaving their full-time jobs. In the mid 1980's, Hospice became a covered Medicare cost,

and in 1989 HOWA received its Medicare Certification followed by Medicaid Certification in 1990.

With the addition of these new funding sources and expanding financial support from the community, Hospice of West Alabama was able to increase its full-time staff and expand services to all of Tuscaloosa County and surrounding areas. In 1998, HOWA became the first free-standing hospice in Alabama to

become a Joint Commission Accredited Agency, which reflects hours of hard work and leadership by Julie Sittason, the Hospice Board and professional staff.

Following achievement of the accreditation, the professional staff and volunteer leadership of HOWA began to focus their efforts on construction of an Inpatient Hospice Facility, where the terminally ill could come in their time of need. By 2000, the planning and design phase was underway. During the next two years, many hours were spent on the design of the new facility, selection of a suitable location, conducting needs assessments and feasibility studies, and fundraising.

By the end of 2002, groundbreaking was held, and in October, 2004, construction was completed and the new inpatient facility opened on November 1, 2004, accepting three patients the first day. Since that time, over 100 patients have come to the inpatient unit and the average daily census continues to grow monthly. In January, 2005, the Joint Commission On Accreditation made another visit, with the home care and new inpatient facility passing the accreditation test with zero deficiencies, a mark only achieved by one other organization surveyed.

Cont'd. pg. 6



Julie Sittason